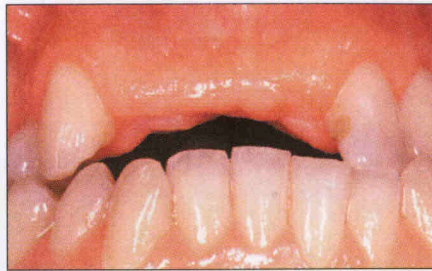


Implants

Placing implants into the space as substitutes for the lost roots is the most natural way to replace missing teeth.



In some instances an implant, or implants, can be inserted into a space to support a crown or a bridge.



This treatment can only be considered after a detailed clinical and medical evaluation has taken place.



Further information on any of the options in this leaflet are available from:


CastleCeramics

Castle Ceramics Dental Laboratory
2 Cavendish, Lichfield Road Tamworth,
Staffordshire B79 7XH

Tel: 01827 67919

Closing a gap



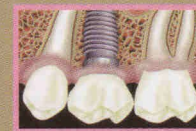
Gap



Denture



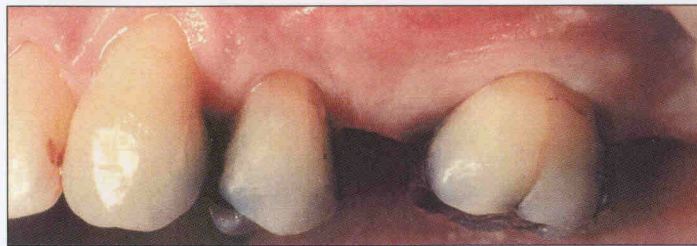
Bridge



Implant


CastleCeramics
Patient
Information Service

Got a problem space...

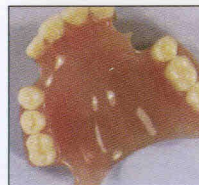


Before

If a tooth or teeth are lost for whatever reason, it is important that the space is closed to maintain the adjacent teeth in their correct position, restore the function and appearance. This can be done in a number of ways.

Dentures

An acrylic plate with plastic teeth is formed on a model made from an impression taken by your dentist, it may cover a large area of the mouth and in doing so reduce the taste of food.



Acrylic plate

A chrome-based plate can be made to which acrylic teeth are attached. This stronger metal can be made much thinner but may require metal clasps to keep it firmly in place.



Metal-based plate

In some cases, tooth coloured clasps can be used to improve the aesthetic appearance.

A chrome denture is made without the metal clasps. This is placed on a 2nd model and the tooth coloured material injected into a mould of the clasps.



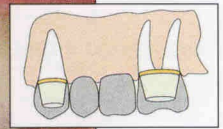
Metal-based plate

Only a full clinical examination will determine what treatment options are possible

...modern dentistry can solve most problems!



After



Bridges

Depending on the size of the space and the condition of the teeth, it may be possible to prepare the adjacent teeth. An impression is taken and a bridge is made in the laboratory. This bridge is then cemented or bonded permanently in place. This can be made in a range of materials.

In single tooth spaces it is sometimes possible to make an adhesive bridge. This is made with only minor modification to one or both of the teeth adjacent to the space.

Materials available

Metal based

Non-precious base metal may cause some grey discoloration over a period of time to the gum around the crown.

Palladium / Gold Alloy is a white alloy that gives better vitality to the ceramic and has good tissue reaction.

Yellow Gold gives a warm internal natural effect to the crown which can give an extra opalescence and natural appearance.

Metal free

Belleglass is a resin based product which, when processed, has characteristics similar to natural teeth.



Non-precious
porcelain



Palladium Gold



Yellow Gold