

# Natural look for decayed teeth

Further information on any of the options  
in this leaflet are available from:

Modern techniques are  
now available which can  
restore a decayed tooth  
to its natural appearance



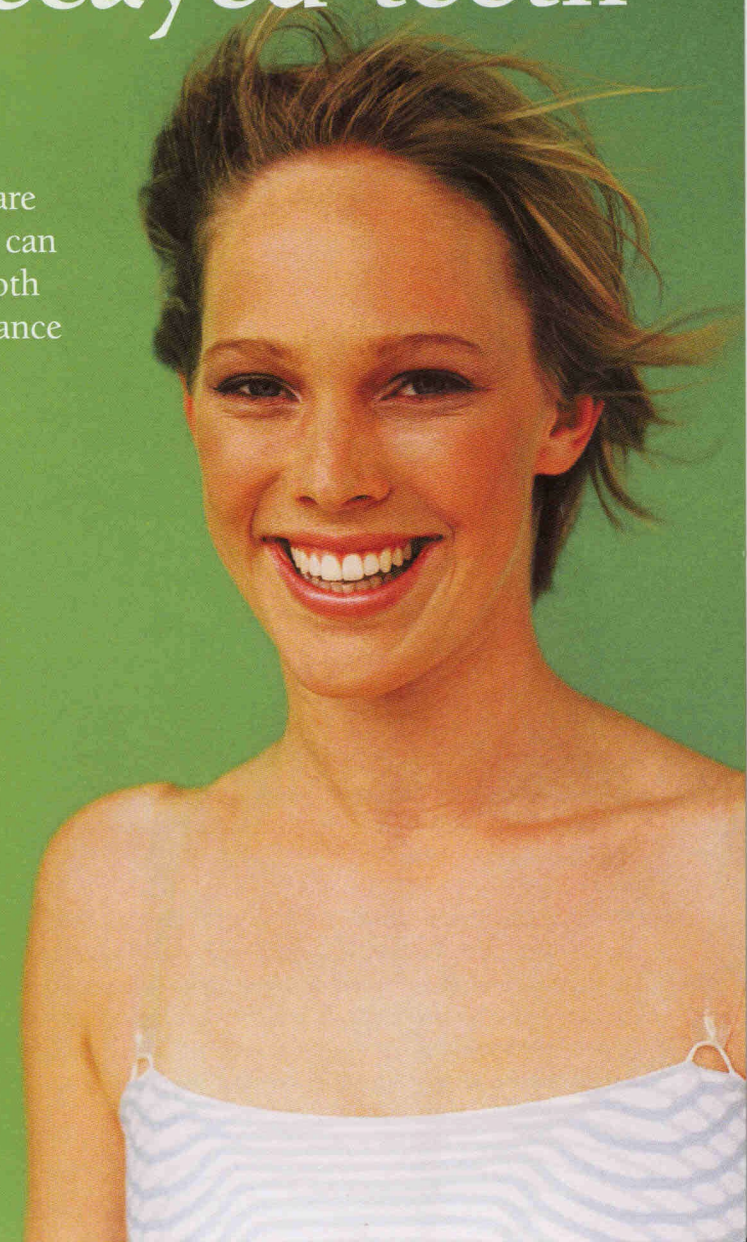
belleGlass



Empress



Fortress



**CastleCeramics**

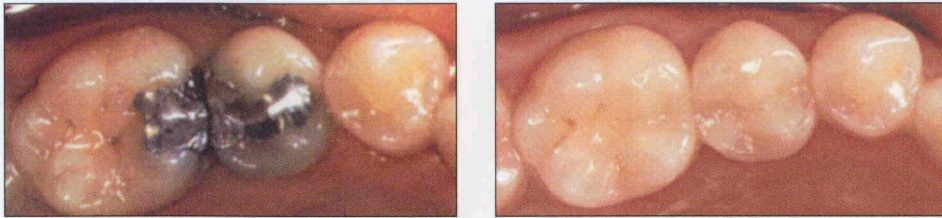
Castle Ceramics Dental Laboratory  
2 Cavendish, Lichfield Road Tamworth,  
Staffordshire B79 7XH

**Tel: 01827 67919**



**CastleCeramics**  
**Patient**  
Information Service

## Why have this?

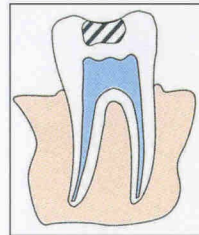


*When you could have this!*

## Made in Surgery (1 visit)

### Small restorations

Your dentist will remove the decayed area or old amalgam filling and treat the tooth surface with an adhesive material. The tooth can then be built up with a tooth coloured material which is hardened by applying a blue or white light to it for one or two minutes. This material can then be trimmed and polished to the exact shape of your natural tooth.

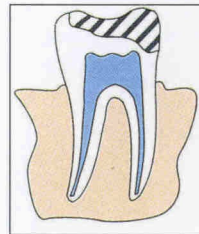


## Made in Laboratory (2 visits)

### Medium to large areas

Larger areas of decay cannot be replaced directly in the surgery. After all the decay has been removed, impressions are taken of all your teeth with an especially accurate impression taken of the area which has to be restored.

In the laboratory a model of all the teeth is made from the impression. A technician will build with the selected material a replacement section to restore the tooth to its natural shape. This is polished and finished ready for the dentist to bond into place. Approximately one week is required between visits during which time a temporary filling may be placed.



## Options

### Medium to large areas

To restore the tooth a number of different materials with different characteristics for different situations are available. Your dentist will recommend the best options to you.

## Belleglass

Belleglass is a resin type material which, when hardened by a special process, has characteristics very similar to a natural tooth.

Used for medium to large restorations



## Empress

Empress is a glass like material which, when heated, is pressed into a pattern made from the shape of the prepared area. This is stained and fired again to match the colour of your natural tooth.

Used for large restorations



## Chameleon / Fortress

Chameleon / Fortress is a porcelain material which is built up on the model of the prepared tooth and fired in a furnace. It is then shaped with diamond stones to the exact shape of your natural tooth.

Used for large to very large restorations



Only a full clinical examination will determine what treatment options are possible